

# GURKHAS EKTA SECURITY SERVICES LIMITED (GESS)



Sharp  
Sound  
Solid  
Security  
Solutions

## SCOPE OF SERVICE:

### A. Gurkhas Ekta (HK) Ltd

The Gurkhas Ekta (HK) Ltd is human resources service provider which was founded in 2003 by the ex – Army personnel in Hong Kong and Nepal. Within a short period of time the Company was well known for its efficient and reliable services for construction and civil engineering projects around in Hong Kong.

### B. Gurkhas Ekta International Ltd

In the process of business expansion, Gurkhas Ekta Internacional de Macau Limitada was established in 2004 and ever since it has been successfully providing quality Managers, Supervisors, Team Leaders and Security Officers and as well as some F & B and hospitality staffs.

### C. Gurkhas Ekta Security Services Ltd

Gurkhas Ekta Security Services Limited (GESS) was founded in 2006 by Ex Army personnel in Hong Kong. GESS have enjoyed an unrivalled success since our launch 8 years ago and intend to stay with our strategy to ensure that clients have instant direct access to our management team. The GESS is providing premium guarding services around in Hong Kong. GESS Ltd is able to assure its high quality services to customers' specific requirements by providing on-site tailor made training by experience Operations Supervisors and management.

## QUALITY:

GESS has a strong and experienced management team to support the front line operations team. The management regularly visits customers to ensure the service quality and handle the special requests b customer. A set of Assignment instruction will be produce for each site. The instruction will cover all requirements of customer and full work details for Security staffs.

Gurkhas Ekta Security Services Limited  
Flat-C2, 20/F, Mai Luen Industrial Building,  
23-31, Kung Yip Street, Kwai Hing, N.T.  
Hong Kong SAR

Tel : 852-2156 2220, Fax : 852-2156 2221  
Email : [gurkhasekta@gmail.com](mailto:gurkhasekta@gmail.com)  
Website : [www.ektainternational.biz](http://www.ektainternational.biz)

## OUR VISION

As our Company was formed on the basis that people are its foundation, it is a prerequisite that all employees feel ownership of the business and subscribe to its vision. Our vision is the basis of our service strategy, which in turn determines the principles for both meeting and exceeding the customer's expectations.

## The company is providing the following services:

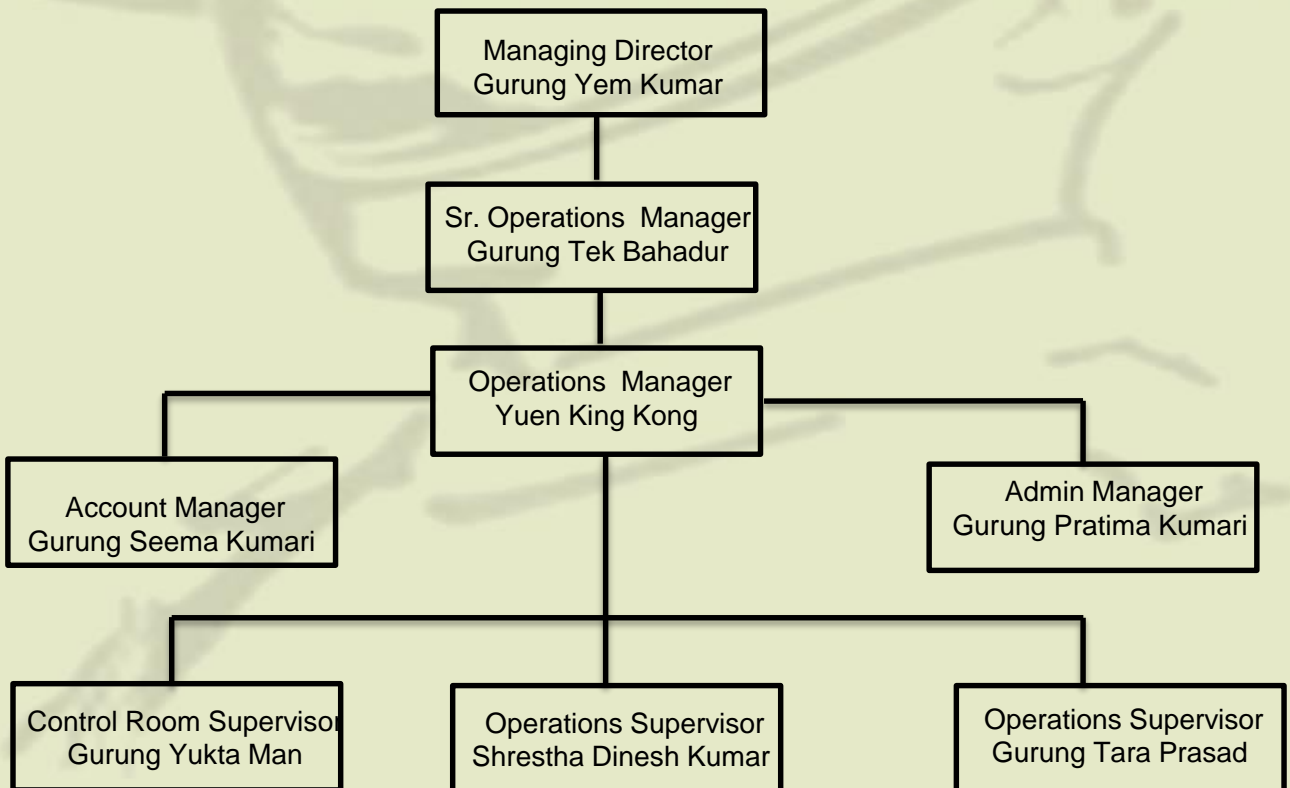
- Gurkha Security Services
- Close Protection Services
- Company & Personnel Drivers
- Risk Management
- Security on-site Training
- Confidential personal vetting & Investigation



## COMPANY MANAGEMENT STRUCTURE

GESS has a strong and experienced management team to support the front line operations team and the management Organization Chart is shown below for your reference

### GURKHAS EKTA SECURITY SERVICES LIMITED MANAGEMENT CHART



## EMPLOYMENT:

GESS recognizes that our most valuable asset is our people as it is they who ultimately determine the quality of our service. GESS owes its success to the outstanding dedication, teamwork and commitment of its people. Identifying the right employees forms an integral part of our service strategy - candidates for security officer positions must meet our stringent company standards and have a strong desire and willingness to work. Those who qualify are rewarded Terms and Conditions which are unparalleled in the industry. In addition to wages, employees also profit from a good benefit package and the ability to work for a company that cares about the individual.



## CONTROL ROOM:

GESS have 24 hours Control center to support and communicate with front line staffs. All security officers are required to report to our control center for their well being. GESS have invested heavily in Control Room Management to ensure the safety of frontline operations staffs, which is often classed as the heart of any large contract runs smoothly and efficiently.



## TRAINING:

GESS realize that people are the most valuable asset that a company can have. Its ethos is based on the belief that if a company continually develops, trains, motivates, coaches and empowers individuals, their performance, commitment and job satisfaction will improve. Where possible, GESS meet with a client representative to obtain first hand experience of current behaviors and the working environment. This ensures that any training is designed to fit with overall business objectives. The following process is implemented:

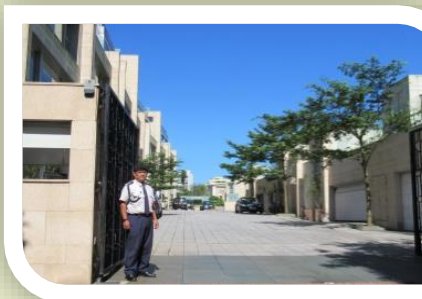
- Training needs analysis
- Design of solution
- Delivery
- Evaluation



## PROVEN SELECTION:

GESS has toughest selection processes and all GESS staff must satisfy with the following minimum employment criteria.

- Served on average of 5 years in the military
- A good military record
- English speaker and writer
- Have served 3 years in reputed security company and recommended by GESS management
- Successfully passed the QAS training



# Gurkhas Ekta Security Services Limited Uniform



## **QUALITY STAFF**

### **Management and Supervisory Visits**

Apart from supervisory visits conducted by Operations Supervisor, Senior Operations Manager Will make regular visits customers to ensure service quality and handle the special requests customers.

### **Customer Satisfaction Survey**

Customer Improvement Programmes aim at establishing a regular communication channel between GESS management and Customer.

## Assignment Instruction

The GESS Ltd will produce an Assignment Instruction covering all requirements of the customer.

In general the Assignment Instruction will cover the following:

- Instruction and duties
- Site specific incident/emergency information
- Patrol route
- Information on Access Control, Key handling, Alarms and Utilities
- Health and Safety

## CLIENTS:

We as a company are committed to providing a security services to a number of Major Clients, These are the selected Clients currently include:

Kanic Property Management Limited  
World Wide Investment Limited  
China Resources Property Management Ltd  
Haigsville International Ltd  
Dickson Concepts (International) Limited  
Kier International Ltd.  
LF Logistics, ATL Hong Kong  
HERAEUS (HK) Limited  
International Social Services (ISS) HK  
CARMEL High School (HK)  
KELLETT International School  
Hong Kong International School



## ACCREDITATIONS:

The provision of comprehensive manned guarding services including mobile patrols, receptionist and key holding activities, which comply with the requirements of the Security Guarding Services Industry codes of practice Ch. 460. The SGSI Approved Contractor Scheme provides a universally recognized hallmark of quality for suppliers of security services. Our clients can now be confident that we are able to offer them continuity of quality, clear customer focus and increased flexibility to their needs, leadership and innovation. Our Staffs are 100% holder of HK Security Personal Permit (SPP) and QAS trained in recognized firm by SGSI.

## **Gurkhas Ekta Security Services Limited (GESS)**

### **Security Control Room Monitoring**

Security control room monitoring is one of the primary duty of Security Officers in today's modern security. The GESS Security Officer is monitoring the situation at one of the GESS's Client's premises from control room.



The GESS Security Officer monitoring Client's Security control room.



# **Gurkhas Ekta Security Services Limited (GESS)**



## **Access to Visitors**

All visitors are confirmed with client and visitors will be granted entry only after registration in compliance with the HK Government legislation Ch. 485.

## **Access Control**

The GESS Security Officer is monitoring and controlling the access for pedestrian and vehicles.



# **Gurkhas Ekta Security Services Limited (GESS)**

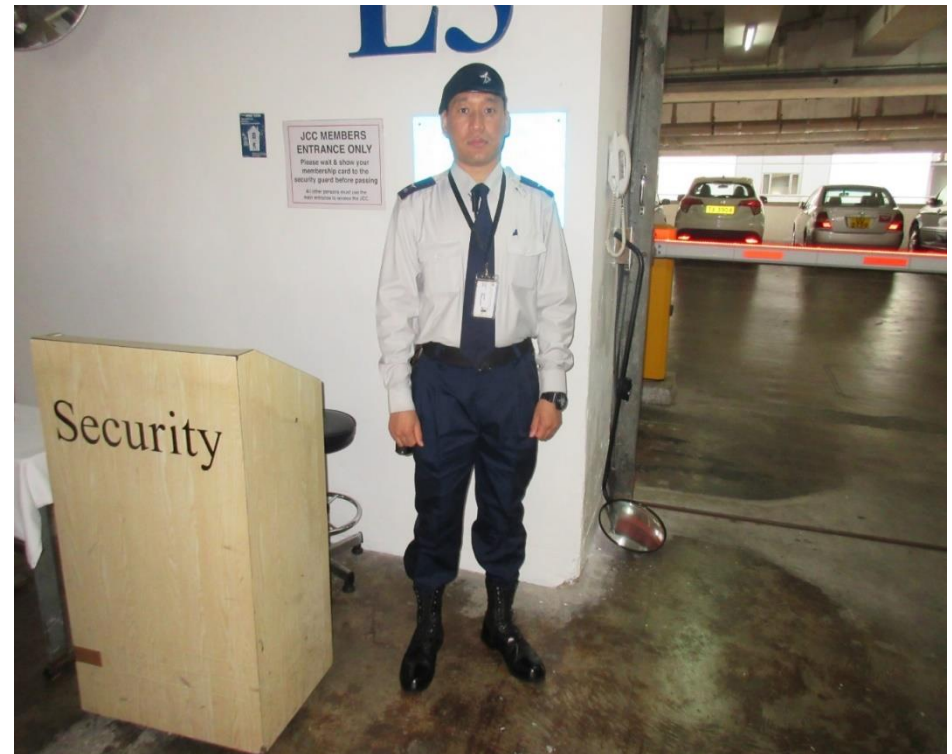


## **Car Park Control**

Car park control and vehicle search is vital part of today's modern security work. The GESS Security Officer is performing duties of car park control at one of the GESS's Client premises.

## **Access Control**

Members of the public are strictly controlled and only authorized personnel are granted entry into one of the GESS's Client premises.





# ***Gurkhas Ekta Security Services Limited (GESS)***



## ***GESS Employee of the Month Award Presentation***

The GESS management values that the staffs are the most valuable asset of the company and the performance award will motivate and empowers the individual's performance and commitment to their work.



## ***Lobby Escort Duty***

The Security Officer will direct the visitor(s) to their destination and escort the VIPs to Senior Management Office. The GESS Security Officer is performing Lobby Escort Duties at one of the GESS's Client premises.



***Lobby Escort Duty***



**Patrol Duty**

The GESS Security Officer is observing any unusual suspicious activities during patrolling

**Patrol Duty**

The purpose of a patrol is to ensure that security duties regarding accident prevention, fire prevention, crime and loss prevention are carried out over the entire site in professional manner including acting as a deterrent to potential theft or burglary.



**Patrol Duty**

The GESS Security Officer is using the Touch Probe Patrol Management System to ensure that he has visited all check points during the patrolling.



**Patrol Duty**



### **Control Room:**

GESS has 24 hours Control Room Center to support and communicate with frontline staffs. All security officers are required to report to the control center for their well being and also to ensure the safety of frontline operations staffs.

### **Patrol Officer Respond to Emergencies:**

GESS has 24 hours on duty Mobile Patrol Officer visiting the duty posts using company vehicle. This will enable him to respond incidents and provide support to frontline staffs in prompt and effective manner. The Mobile Patrol Officer will constantly communicate with Control Room and provide SITREP (Situation Report) of frontline staffs. And before the end of his duty, he will submit a posts visit report to Operations Manager through Control Room. Follow up action is taken as per the instructions of Operations Manager.

